

Removing and installing parts of cooling system

Removing and installing coolant thermostat

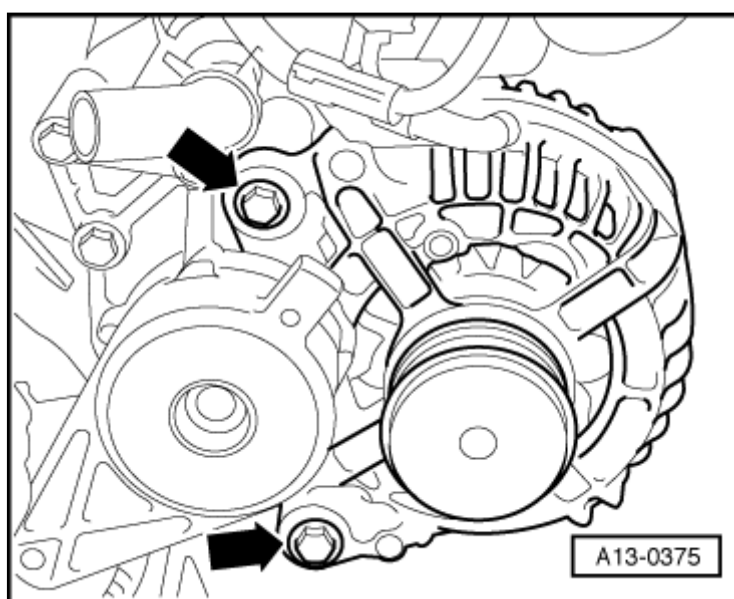
Removing

Caution!

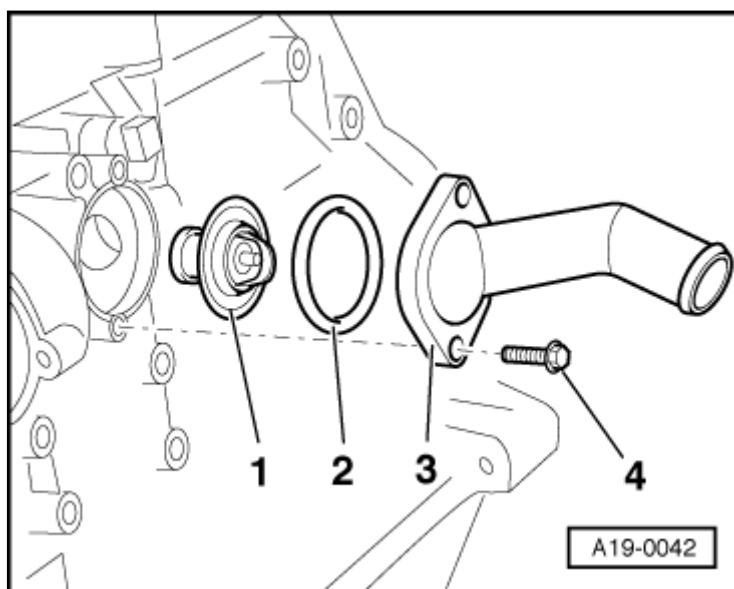
On vehicles equipped with telematics the telematics control unit must be switched to service mode before the battery terminals are disconnected.=>Radio, telephone and navigation system; Repair group 91

- Obtain code on vehicles with coded radio/integrated radio and navigation system.
- With ignition switched off disconnect battery earth strap.
- Drain cooling system=> Page [19-4](#)
- Remove ribbed belt => Page [13-9](#).

- → Unscrew bolts for alternator - arrows- and lay alternator forward. The wires remain connected.



- → Disconnect coolant hose from connection -3-.
- Unscrew bolts -4- and remove connection, O-ring -2- and coolant thermostat -1-.



Installing

Install in reverse sequence; note the following points:

Note:

Replace O-ring.

- Clean and smooth down sealing surface for O-ring as required.
- Insert coolant thermostat.
 - Installation position: cross-piece on thermostat should be vertical.

- Moisten new O ring with coolant G 012 A8 D.
- Install ribbed belt =>Page [13-10](#).
- Fill up with coolant=> Page [19-7](#).

Notes:

- ☐ When the battery is reconnected, re-activate electrical equipment (radio, combined radio/navigation system, clock, electric windows) as described in the Owner's Manual.
- ☐ De-activate service mode in telematics control unit.

=> [Radio, telephone and navigation system; Repair group 91](#)

- ☐ Further procedures after reconnecting the voltage supply:

=> [Motronic injection and ignition system; Repair group 24](#)

Tightening torque

Component	Nm
Connection to cylinder block	15
Alternator to auxiliary drive mounting bracket	23

Testing coolant thermostat

- Heat thermostat in water bath.

Opening temperature	Closing temperature	Travel
approx. 87° C	approx. 102° C 1)	at least 7 mm

- 1) cannot be tested