

Trims

Removing and installing B-pillar trim

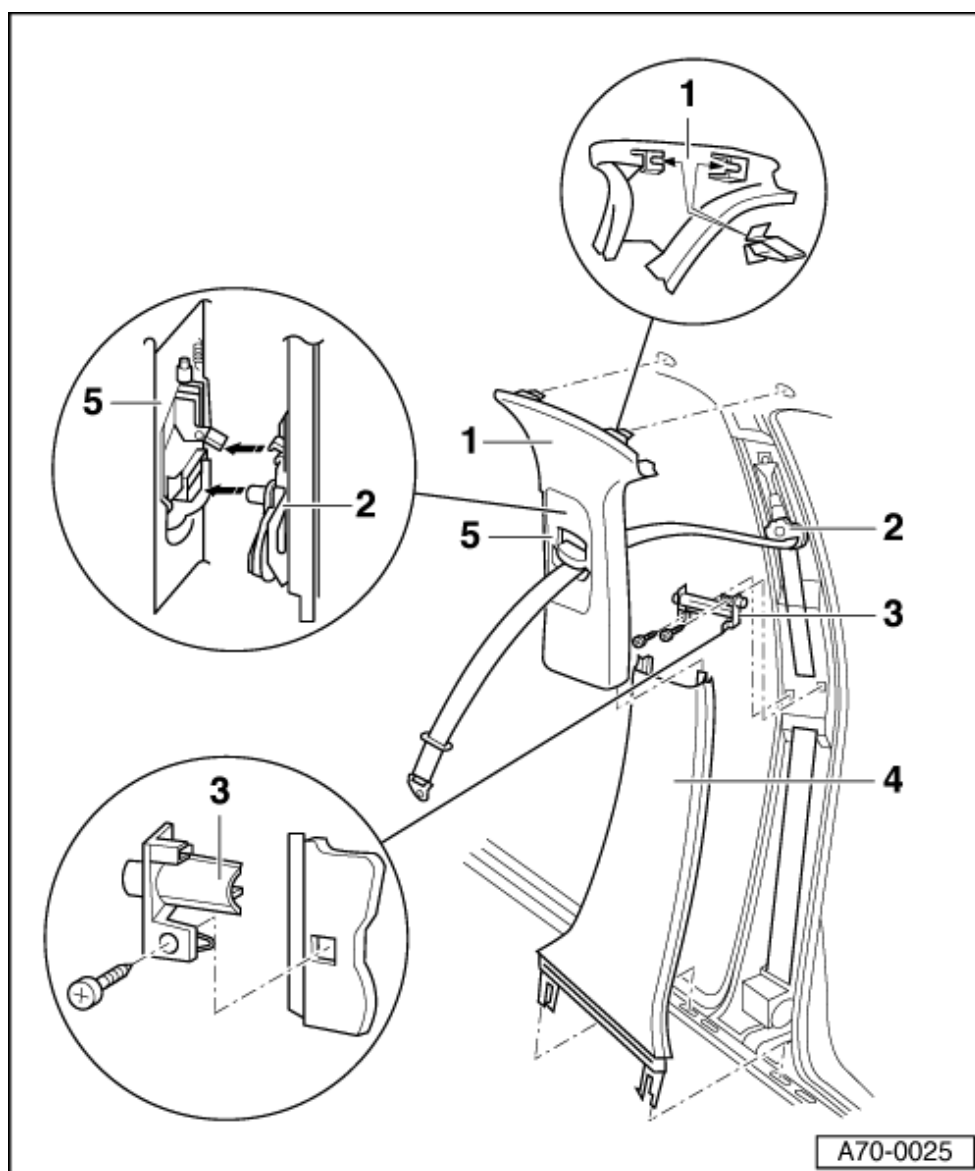
1. Upper B-pillar trim

◆ Removing

- Unclipping upper B-pillar trim -1-, => Fig 2
- Pull B-pillar trim -1- upwards out of B-pillar trim -4-.
- Detaching three-point seat belt at sill panel => Page 69-14
- Guide three-point seat belt out of B-pillar trim -1-.

◆ Installing

- Fit B-pillar trim -1- in position in B-pillar trim -4-.



Note:

Do not press button when installing.

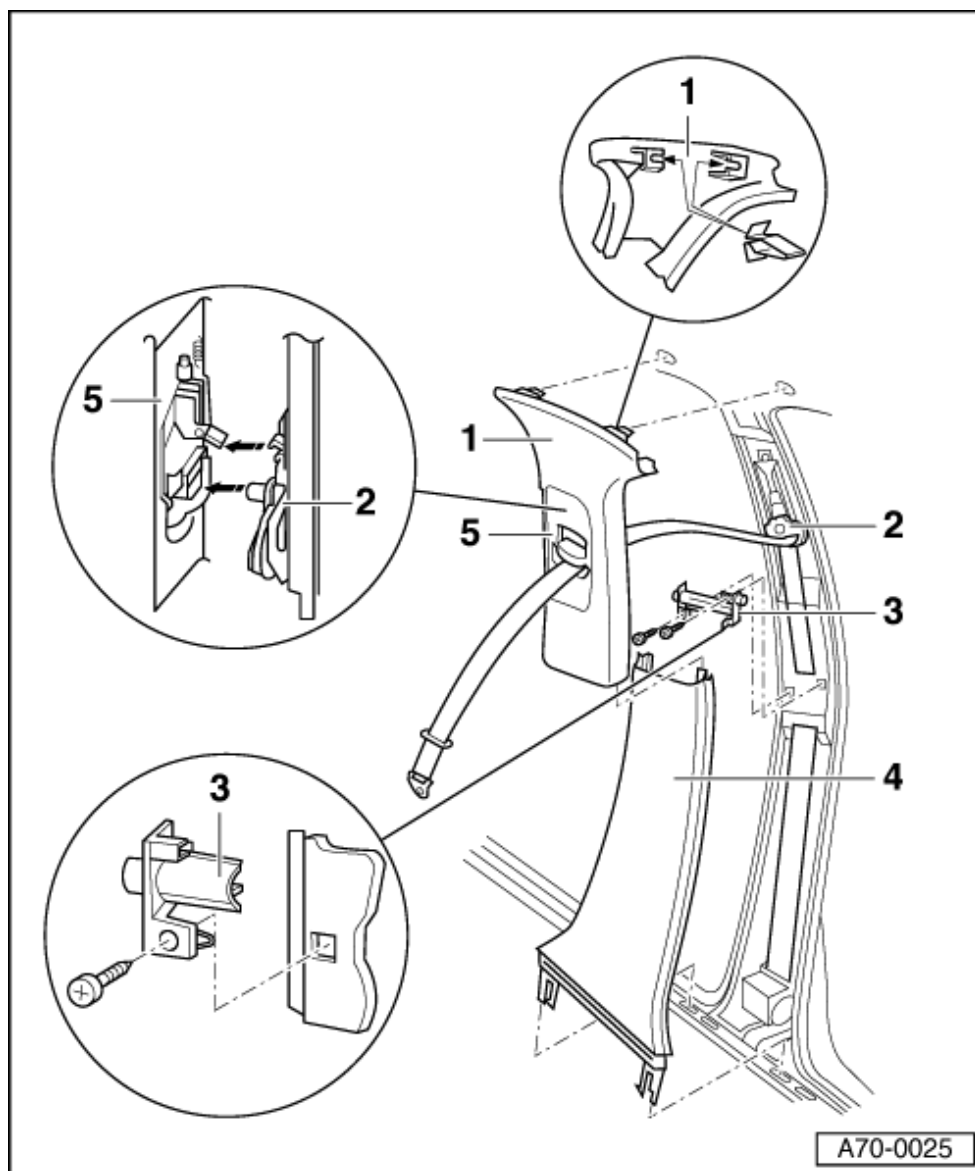
- Clip in upper B-pillar trim
- Trim for belt guide -5- must be positioned in belt height => Fig1

Notes:

Check operation after installing trim:

Height adjuster must engage audibly in each of the 5 possible positions (including top position).

Each time the height adjustment fitting is pressed it should return automatically to the "up" position.



2. Guide fitting
3. Belt guide
4. Lower B-pillar trim

◆ Removing

- Remove upper B-pillar trim -1- (without detaching three-point seat belt).
- Press back retaining lugs (2x) of B-pillar trim at sill panel
- Detach trim -4-

upwards
and
disengage
from belt
guide -3-.

◆ Installing

- Install in reverse order.

5. Trim for belt height adjuster

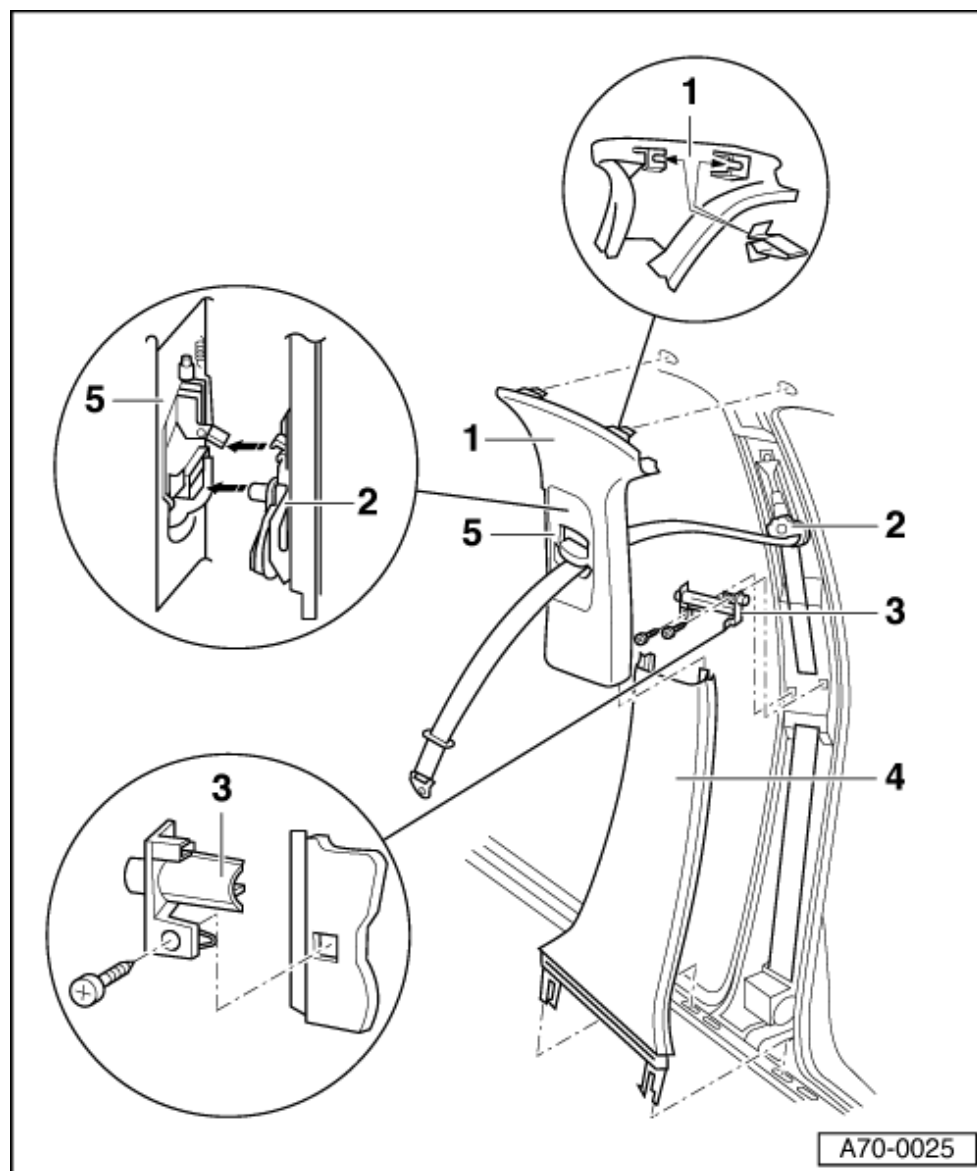


Fig.:1 Installing upper B-pillar trim in belt height adjuster

- Move slide with button -4- (do not press button) downwards to height adjuster release lever -1- and at the same time insert pin -2- in mount -3-.

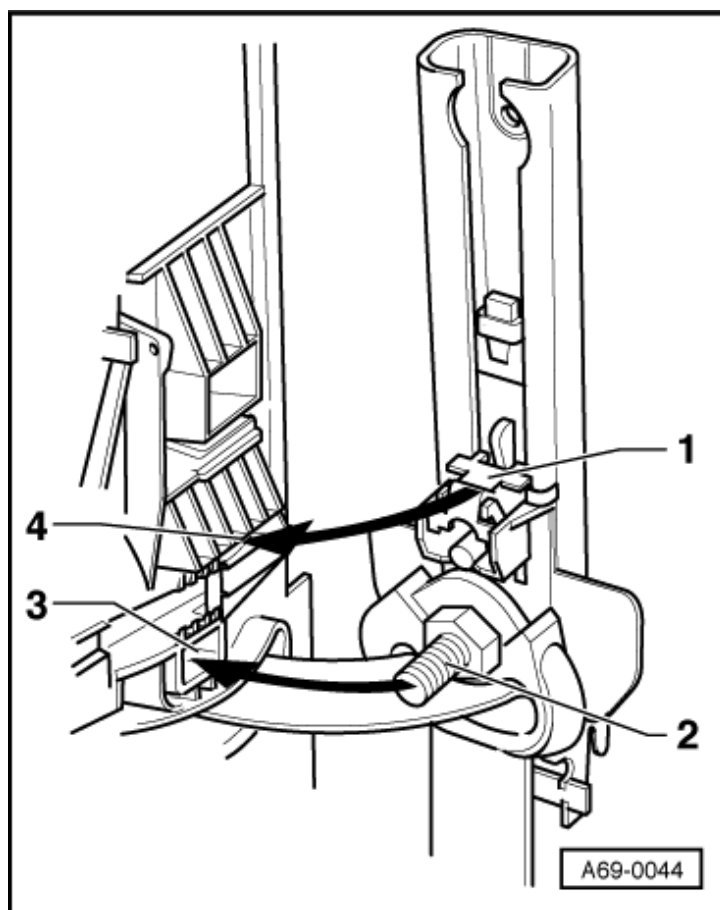


Fig.:2 Removing lower B-pillar trim

- → To facilitate disassembly use two assembly hooks -2 -.
- Apply assembly hooks next to fasteners.

