

Door trims

Removing and installing front door trim

1. **Window crank**
 - ◆ Removing => Fig. 1
 - ◆ Mounting orientation => Fig.2
 - ◆ Secure screw with locking compound AMV 197 000 01
 - ◆ Tightening torque 2.5 Nm
2. **Washer**
3. **Handle cover**
 - ◆ Removing => Fig.4
4. **Self-tapping screw - 2.5 Nm**
 - ◆ 2 off
5. **Handle**

6. **Adjuster knobs for mirror control**

- ◆ Detach adjuster knobs
- ◆ Unclip adjuster mechanism from trim plate -item 7-
- ◆ Adjusting mirror control => Page 66-21.

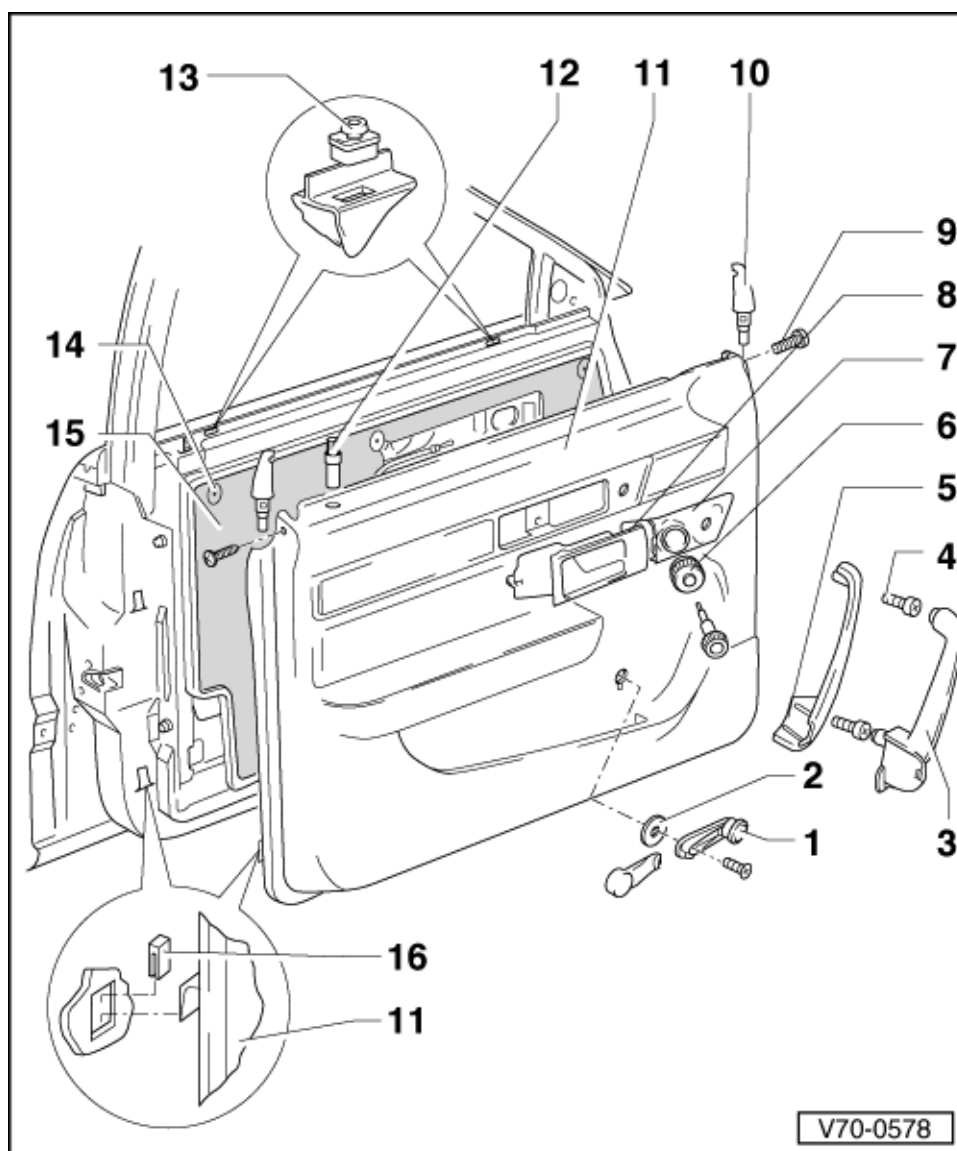
7. **Trim plate**

- ◆ Press in direction of travel
- ◆ Remove from door trim

8. **Inside door control**

- ◆ Press in direction of travel
- ◆ Remove from door trim
- ◆ Detach Bowden cable => Fig.5

9. **Combi self-tapping screw - 1.5 Nm**



10. **Adapter**

- ◆ 2 off
- ◆ Detach from frame
- ◆ Installing => Fig.6

11. **Trim**

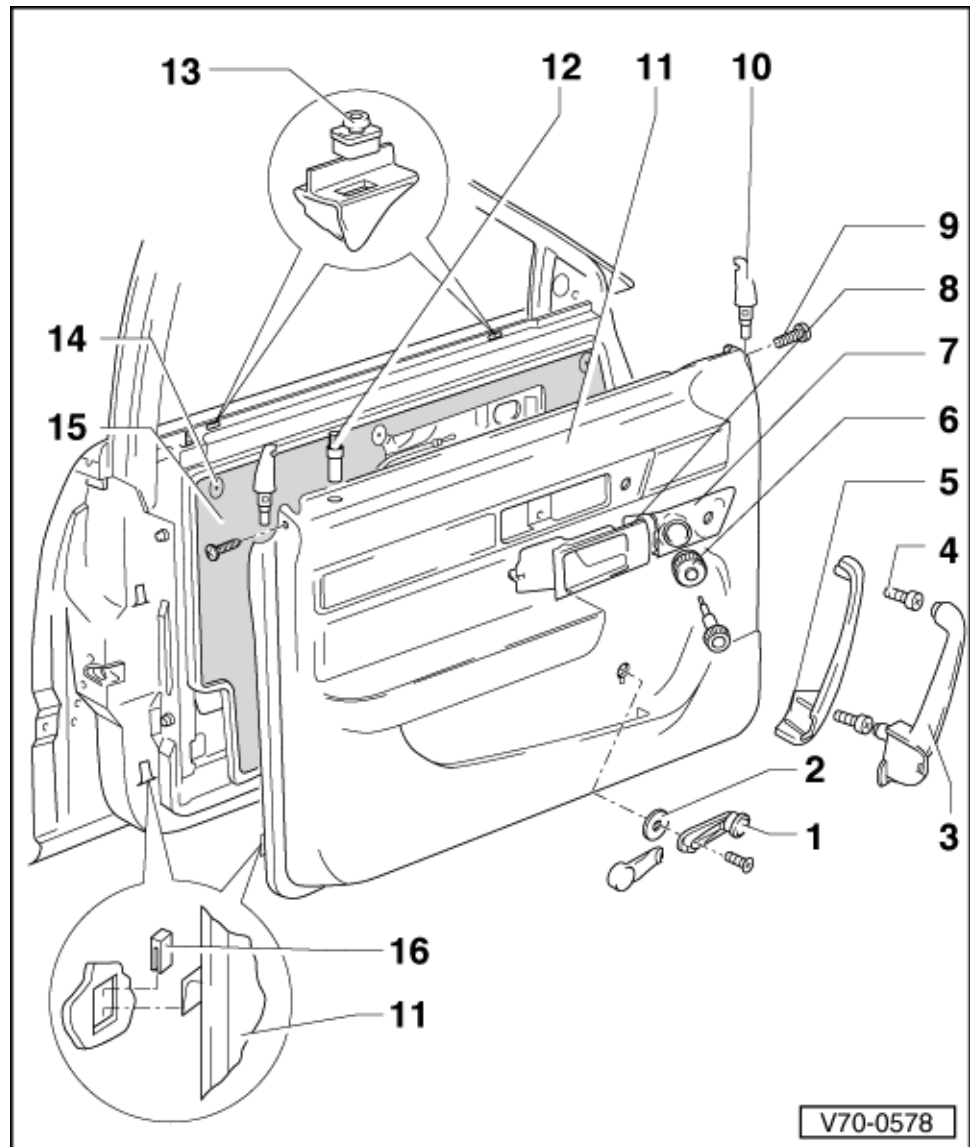
- ◆ Number

and position of retaining hooks => Fig.7

- ◆ In vehicles with electric windows, remove console with switching unit => Fig.9
- ◆ Disconnect connectors
- ◆ Remove trim upward

12. Lock knob

- ◆ Not necessary to remove in order to remove trim
- ◆ Removal and fitting position => Fig.10



13. Adjusting clip

- ◆ All adjusters must be at the same height to the window slot seal on the outside

14. Stopper

- ◆ 3 off

15. Damper

- ◆ To remove, unclip stopper - item 14- from door component carrier

16. Shim for retaining hook

- ◆ Plug-on; for ease of fitting, stick on lightly

